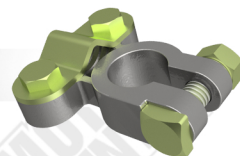


BCM/FCM Reset to Clear Faults & Restore Module Communication (For GM and Mopar vehicles — gasoline and diesel)

This hard reset helps clear temporary faults, restore communication between modules, and stabilize body-related systems after replacing or servicing the Body Control Module (BCM) or Front Control Module (FCM). It's especially useful for resolving warning lights, communication errors, or system glitches following installation.

Step 1: Disconnect Battery Power



• Gasoline Vehicles:

Disconnect both the positive (+) and negative (-) battery terminals.

• Diesel Vehicles:

Disconnect both batteries completely, removing both terminals from each.

- Once disconnected, leave the vehicle powered down for a minimum of 1 hour.
- Do not reconnect the battery or attempt to start the vehicle during this time.
- This allows capacitors and volatile memory in the modules to fully discharge.

Note:

• **GM vehicles:** 1 hour is typically sufficient.

• **Mopar vehicles:** Some systems may benefit from a longer disconnect period, up to 24 hours, especially when stubborn faults persist.

Optional - Deep Capacitor Discharge

To speed up the reset process:

- With the battery terminals disconnected, touch and hold the positive and negative battery cables together (metal ends only) for about 60 seconds.
- This helps discharge any residual voltage from control module capacitors.



Step 2: Reconnect Battery Power

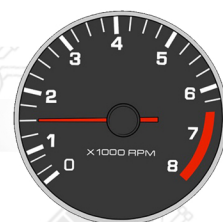
After the disconnect period:

- Reconnect the positive terminal first, then the negative terminal.
- For diesel vehicles, ensure both batteries are securely reconnected.



Step 3: Key-On Initialization

1. Turn the key to the ON/RUN position (engine off, dashboard lights on).
2. Leave the key in the ON position for 15 minutes.
 - Do not start the engine during this time.
 - This allows the BCM/FCM and related modules to reinitialize.
3. Turn the key to OFF and leave it off for at least 1 minute.



Step 4: Start & Idle

1. Start the engine and let it idle in PARK or NEUTRAL for 10-15 minutes.
2. Do not touch the gas pedal or rev the engine.
 - This gives modules time to stabilize power and communication lines.

Additional Notes:

• Window or feature relearns may be required:

After the reset, some features (like auto up/down windows) may need reinitialization by running them fully up and down once.

• Repeat If Necessary:

If warning lights or communication issues persist, a second or longer reset may help — especially for Mopar vehicles with deeply latched fault states.

• Avoid Clearing Codes Immediately:

Let the reset and idle period finish before clearing codes. Clearing too early can interfere with proper module communication.